

Line 020

QUICK FILLING VALVE

What is it?

DG 020 is a pulsating valve with fixed presetting.

What is it used for?

DG 020 can quickly fill tanks at a preset pressure.

Filling time is reduced by over 50% with respect to the usage of a normal pressure regulator.

How does it work?

The functioning is fully pneumatic, taking advantage of a pulsating system. It alternates air intake and self-reading until a preset pressure value is reached.

ADVANTAGES

- *Filling quickness*
- *Small dimensions*
- *Safety*
- *Versatility*



«Made in Italy product»

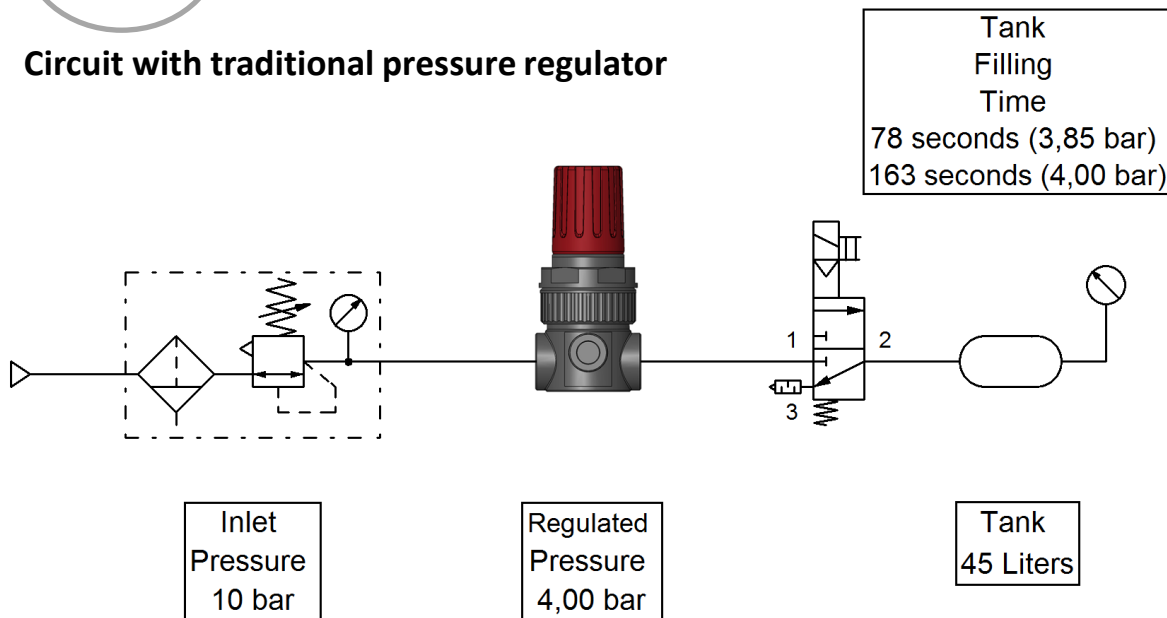


Line 020



163 Sec.

- **Circuit with traditional pressure regulator**



35 Sec.

- **Circuit with quick filling valve DG 020**

