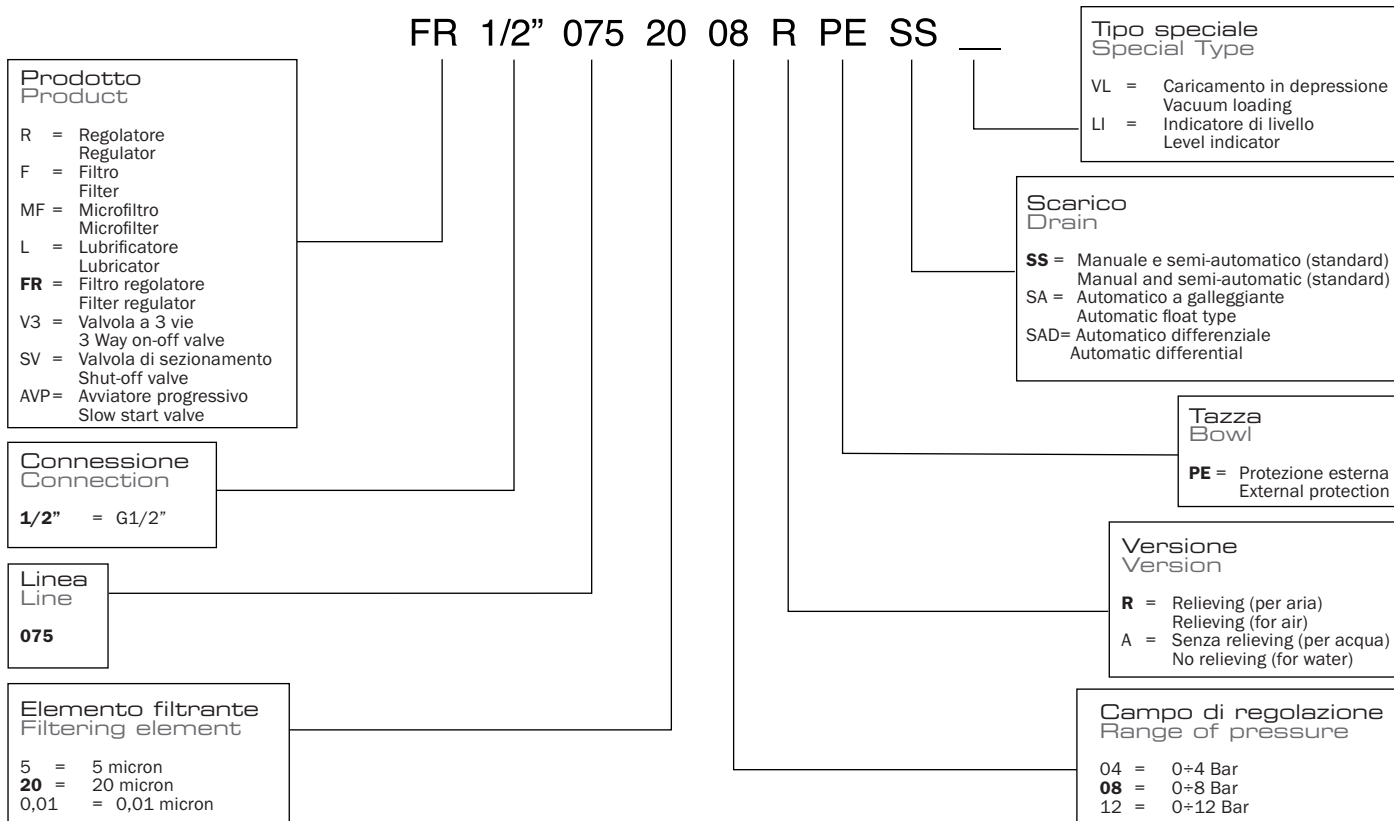
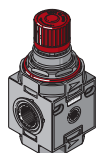


Guida alle referenze Guide to references

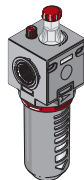


Regolatore Regulator



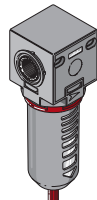
CODICE-CODE	REF.
075.11.00003	R 1/2" 075 04 R
075.11.*****	R 1/2" 075 08 R
075.11.00002	R 1/2" 075 12 R

Lubrificatore Lubricator



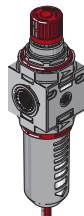
CODICE-CODE	REF.
075.13.00025	L 1/2" 075 PE
075.13.00500	L 1/2" 075 PE VL
075.13.00032	L 1/2" 075 PE IL

Filtro Filter



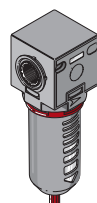
CODICE-CODE	REF.
075.12.00025	F 1/2" 075 20 PE SS
075.12.00057	F 1/2" 075 5 PE SS
Versione Scarico Automatico a galleggiante Float type automatic drain version	
075.12.00026	F 1/2" 075 20 PE SA
075.12.00058	F 1/2" 075 5 PE SA
Versione Scarico Automatico "Differenziale" "Differential" automatic drain version	
075.12.00076	F 1/2" 075 20 PE SAD
075.12.00077	F 1/2" 075 5 PE SAD

Filtro regolatore Filter regulator



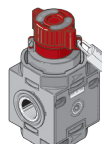
CODICE-CODE	REF.
075.14.00025	FR 1/2" 075 20 08 R PE SS
075.14.00053	FR 1/2" 075 20 12 R PE SS
075.14.00062	FR 1/2" 075 5 04 R PE SS
075.14.00063	FR 1/2" 075 5 08 R PE SS
075.14.00064	FR 1/2" 075 5 12 R PE SS
Versione Scarico Automatico a galleggiante Float type automatic drain version	
075.14.00026	FR 1/2" 075 20 08 R PE SA
075.14.00065	FR 1/2" 075 20 12 R PE SA
Versione Scarico Automatico "Differenziale" "Differential" automatic drain version	
075.14.00097	FR 1/2" 075 20 08 R PE SAD
075.14.00098	FR 1/2" 075 20 12 R PE SAD

Microfiltro antiolio a coalescenza Coalescent oil-proof microfilter



CODICE-CODE	REF.
075.12.00027	MF 1/2" 075 0,01 PE SS
Versione Scarico Automatico a galleggiante Float type automatic drain version	
075.12.00028	MF 1/2" 075 0,01 PE SA
Versione Scarico Automatico "Differenziale" "Differential" automatic drain version	
075.12.00078	MF 1/2" 075 0,01 PE SAD

Valvola d'intercettazione a 3 vie con blocco 3 Way on-off valve



CODICE-CODE	REF.
075.25.00001	V 1/2" 075 V 3

→ = Standard version

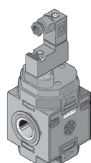
Modular line

AIRCOMP

075 1/2"

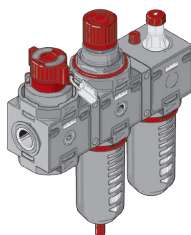
Codici di ordinazione
Order Code

Valvola d'intercettazione a 3 vie con blocco
3 Way on-off valve



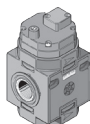
CODICE-CODE	REF.
→ 075.26.00002	SV 1/2" 075 Pred. C. Electr. Microsol/Pneum.
C50.26.00002	Kit. C. Electr. 3/2 NC 2W 24V DC Microsol
C50.26.00003	Kit. C. Electr. 3/2 NC 1W 24V AC Microsol
C50.26.00004	Kit. C. Electr. 3/2 NC 1W 110V AC Microsol
C50.26.00005	Kit. C. Electr. 3/2 NC 1W 220V AC Microsol
C40.26.00014	Kit. C. Pneumatic
CODICE-CODE	REF.
→ 075.26.00001	SV 1/2" 075 Pred. C. Electr. Cnomo
C50.26.00006	C. Electr. EV 3/2 NC Cnomo
A50.26.00006	Sol. 5W 24V DC
A50.26.00007	Sol. 5W 24V AC
A50.26.00008	Sol. 5W 110V AC
A50.26.00009	Sol. 5W 220V AC
A50.26.00010	Con. Cnomo

Gruppo V3+FR+L
V3+FR+L Unit



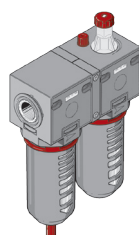
CODICE-CODE	REF.
→ 075.36.00025	V3+FR+L 1/2" 075 20 08 R PE SS
075.36.00053	V3+FR+L 1/2" 075 20 12 R PE SS
075.36.00064	V3+FR+L 1/2" 075 5 04 R PE SS
075.36.00065	V3+FR+L 1/2" 075 5 08 R PE SS
075.36.00066	V3+FR+L 1/2" 075 5 12 R PE SS
075.36.00501	V3+FR+L 1/2" 075 20 08 R PE SS VL
075.36.00505	V3+FR+L 1/2" 075 20 12 R PE SS VL
Versione Scarico Automatico a galleggiante Float type automatic drain version	
075.36.00026	V3+FR+L 1/2" 075 20 08 R PE SA
075.36.00068	V3+FR+L 1/2" 075 20 12 R PE SA
Versione Scarico Automatico "Differenziale" "Differential" automatic drain version	
075.36.00072	V3+FR+L 1/2" 075 20 08 R PE SAD
075.36.00073	V3+FR+L 1/2" 075 20 12 R PE SAD

Avviatore progressivo
Slow start valve



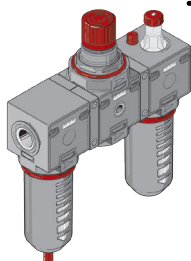
CODICE-CODE	REF.
→ 075.27.00001	AVP 1/2" 075 PN Autom.

Gruppo F+L
F+L Unit



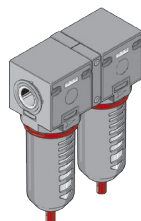
CODICE-CODE	REF.
→ 075.17.00025	F+L 1/2" 075 20 PE SS
075.17.00031	F+L 1/2" 075 5 PE SS
075.17.00501	F+L 1/2" 075 20 PE SS VL
Versione Scarico Automatico a galleggiante Float type automatic drain version	
075.17.00026	F+L 1/2" 075 20 PE SA
075.17.00032	F+L 1/2" 075 5 PE SA
075.17.00511	F+L 1/2" 075 20 PE SA VL
Versione Scarico Automatico "Differenziale" "Differential" automatic drain version	
075.17.00033	F+L 1/2" 075 20 PE SAD
075.17.00034	F+L 1/2" 075 5 PE SAD

Gruppo F+R+L
F+R+L Unit



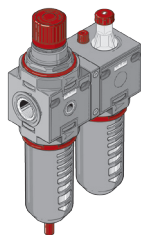
CODICE-CODE	REF.
→ 075.15.00025	F+R+L 1/2" 075 20 08 R PE SS
075.15.00041	F+R+L 1/2" 075 20 12 R PE SS
075.15.00042	F+R+L 1/2" 075 5 04 R PE SS
075.15.00043	F+R+L 1/2" 075 5 08 R PE SS
075.15.00044	F+R+L 1/2" 075 5 12 R PE SS
075.15.00501	F+R+L 1/2" 075 20 08 R PE SS VL
075.15.00505	F+R+L 1/2" 075 20 12 R PE SS VL
Versione Scarico Automatico a galleggiante Float type automatic drain version	
075.15.00026	F+R+L 1/2" 075 20 08 R PE SA
075.15.00046	F+R+L 1/2" 075 20 12 R PE SA
Versione Scarico Automatico "Differenziale" "Differential" automatic drain version	
075.15.00067	F+R+L 1/2" 075 20 08 R PE SAD
075.15.00069	F+R+L 1/2" 075 20 12 R PE SAD

Gruppo F+MF
F+MF Unit



CODICE-CODE	REF.
→ 075.19.00001	F 1/2" 075 5 PE SS+MF 1/2" 075 0,01 PE SS
Versione Scarico Automatico a galleggiante Float type automatic drain version	
075.19.00002	F 1/2" 075 5 PE SS+MF 1/2" 075 0,01 PE SA
Versione Scarico Automatico "Differenziale" "Differential" automatic drain version	
075.19.00004	F 1/2" 075 5 PE SS+MF 1/2" 075 0,01 PE SAD

Gruppo FR+L
FR+L Unit



CODICE-CODE	REF.
→ 075.16.00025	FR+L 1/2" 075 20 08 R PE SS
075.16.00053	FR+L 1/2" 075 20 12 R PE SS
075.16.00064	FR+L 1/2" 075 5 04 R PE SS
075.16.00065	FR+L 1/2" 075 5 08 R PE SS
075.16.00066	FR+L 1/2" 075 5 12 R PE SS
075.16.00501	FR+L 1/2" 075 20 08 R PE SS VL
075.16.00505	FR+L 1/2" 075 20 12 R PE SS VL
Versione Scarico Automatico a galleggiante Float type automatic drain version	
075.16.00026	FR+L 1/2" 075 20 08 R PE SA
075.16.00068	FR+L 1/2" 075 20 12 R PE SA
Versione Scarico Automatico "Differenziale" "Differential" automatic drain version	
075.16.00096	FR+L 1/2" 075 20 08 R PE SAD
075.16.00097	FR+L 1/2" 075 20 12 R PE SAD

Per altre esecuzioni
contattare l'ufficio
commerciale

For further versions,
please contact our
sales dept.

→ = Standard version