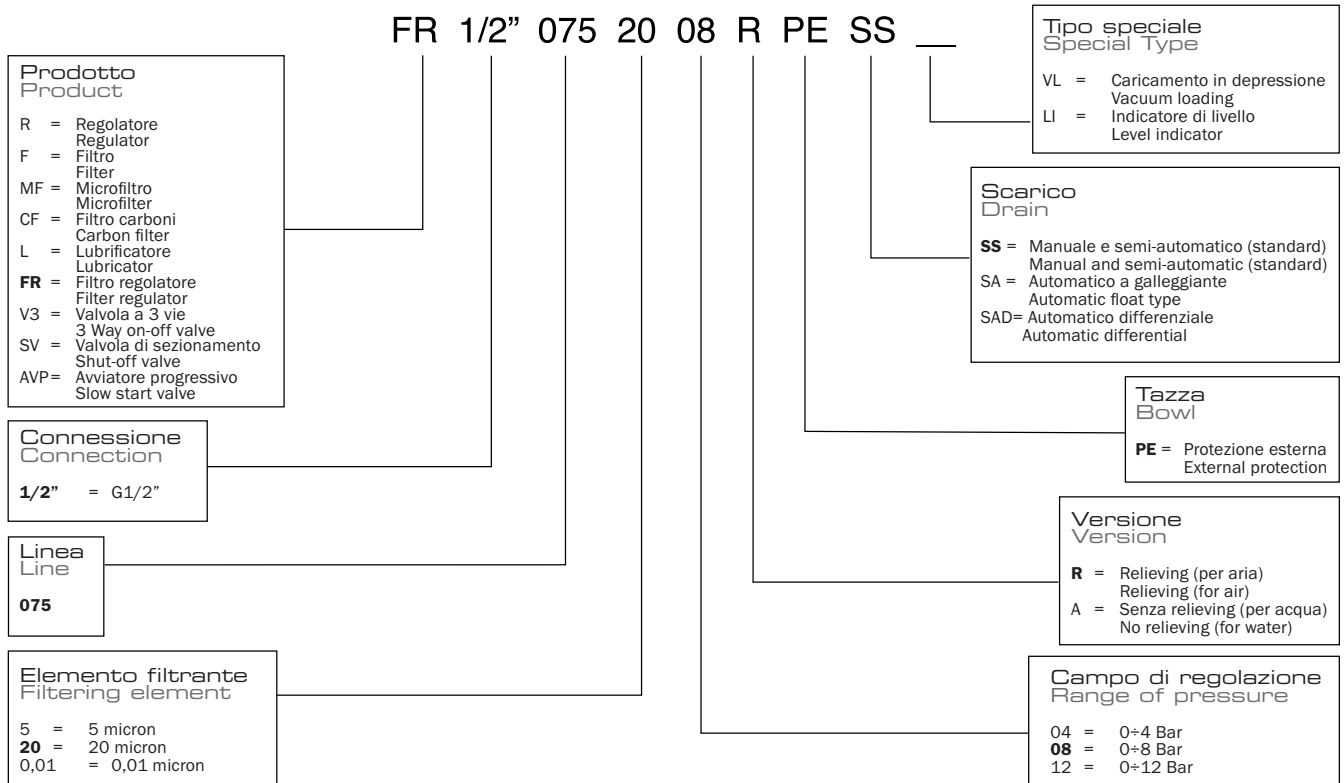
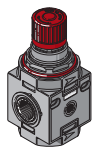


Guida alle referenze Guide to references



Regolatore Regulator



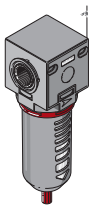
CODICE-CODE	REF.
075.11.00003	R 1/2" 075 04 R
075.11.*****	R 1/2" 075 08 R
075.11.00002	R 1/2" 075 12 R

Filtro a Carboni attivi Activated Carbon filter



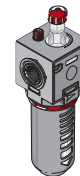
CODICE-CODE	REF.
075.12.00300	CF 1/2" 075 CA PE

Filtro Filter



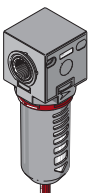
CODICE-CODE	REF.
075.12.00025	F 1/2" 075 20 PE SS
075.12.00057	F 1/2" 075 5 PE SS
Versione Scarico Automatico a galleggiante Float type automatic drain version	
075.12.00026	F 1/2" 075 20 PE SA
075.12.00058	F 1/2" 075 5 PE SA
Versione Scarico Automatico "Differenziale" "Differential" automatic drain version	
075.12.00076	F 1/2" 075 20 PE SAD
075.12.00077	F 1/2" 075 5 PE SAD

Lubrificatore Lubricator



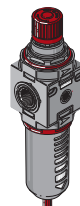
CODICE-CODE	REF.
075.13.00025	L 1/2" 075 PE
075.13.00500	L 1/2" 075 PE VL
075.13.00032	L 1/2" 075 PE IL

Microfiltro antiolio a coalescenza Coalescent oil-proof microfilter



CODICE-CODE	REF.
075.12.00027	MF 1/2" 075 0,01 PE SS
Versione Scarico Automatico a galleggiante Float type automatic drain version	
075.12.00028	MF 1/2" 075 0,01 PE SA
Versione Scarico Automatico "Differenziale" "Differential" automatic drain version	
075.12.00078	MF 1/2" 075 0,01 PE SAD

Filtro regolatore Filter regulator

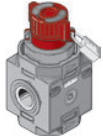


CODICE-CODE	REF.
075.14.00025	FR 1/2" 075 20 08 R PE SS
075.14.00053	FR 1/2" 075 20 12 R PE SS
075.14.00062	FR 1/2" 075 5 04 R PE SS
075.14.00063	FR 1/2" 075 5 08 R PE SS
075.14.00064	FR 1/2" 075 5 12 R PE SS
Versione Scarico Automatico a galleggiante Float type automatic drain version	
075.14.00026	FR 1/2" 075 20 08 R PE SA
075.14.00065	FR 1/2" 075 20 12 R PE SA
Versione Scarico Automatico "Differenziale" "Differential" automatic drain version	
075.14.00097	FR 1/2" 075 20 08 R PE SAD
075.14.00098	FR 1/2" 075 20 12 R PE SAD

Line 075 1/2"

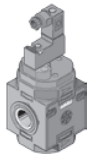
Codici di ordinazione Order Code

Valvola d'intercettazione a 3 vie con blocco
3 Way on-off valve



CODICE-CODE	REF.
→ 075.25.00001	V 1/2" 075 V 3

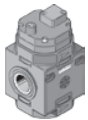
Valvola d'intercettazione a 3 vie con blocco
3 Way on-off valve



CODICE-CODE	REF.
→ 075.26.00002	SV 1/2" 075 Pred. C. Electr. Microsol/Pneum.
C50.26.00002	Kit. C. Electr. 3/2 NC 2W 24V DC Microsol
C50.26.00003	Kit. C. Electr. 3/2 NC 1W 24V AC Microsol
C50.26.00004	Kit. C. Electr. 3/2 NC 1W 110V AC Microsol
C50.26.00005	Kit. C. Electr. 3/2 NC 1W 220V AC Microsol
C40.26.00014	Kit. C. Pneumatic
C50.26.00005	Kit. C. Electr. 3/2 NC 1W 220V AC Microsol
C40.26.00014	Kit. C. Pneumatic

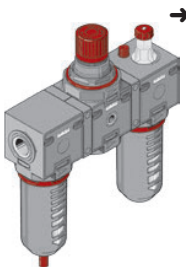
CODICE-CODE	REF.
→ 075.26.00001	SV 1/2" 075 Pred. C. Electr. Cnomo
C50.26.00006	C. Electr. EV 3/2 NC Cnomo
A50.26.00006	Sol. 5W 24V DC
A50.26.00007	Sol. 5W 24V AC
A50.26.00008	Sol. 5W 110V AC
A50.26.00009	Sol. 5W 220V AC
A50.26.00010	Conn. Cnomo
A50.26.00009	Sol. 5W 220V AC
A50.26.00010	Conn. Cnomo

Aviatore progressivo
Slow start valve



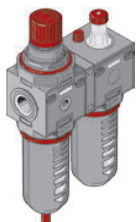
CODICE-CODE	REF.
→ 075.27.00001	AVP 1/2" 075 PN Autom.

Gruppo F+R+L
F+R+L Unit



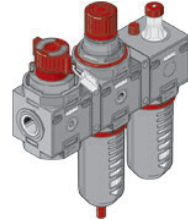
CODICE-CODE	REF.
→ 075.15.00025	F+R+L 1/2" 075 20 08 R PE SS
075.15.00041	F+R+L 1/2" 075 20 12 R PE SS
075.15.00043	F+R+L 1/2" 075 5 08 R PE SS
075.15.00044	F+R+L 1/2" 075 5 12 R PE SS
075.15.00501	F+R+L 1/2" 075 20 08 R PE SS VL
Versione Scarico Automatico a galleggiante	
Float type automatic drain version	
075.15.00026	F+R+L 1/2" 075 20 08 R PE SA
075.15.00046	F+R+L 1/2" 075 20 12 R PE SA
Versione Scarico Automatico "Differenziale"	
"Differential" automatic drain version	
075.15.00067	F+R+L 1/2" 075 20 08 R PE SAD
075.15.00069	F+R+L 1/2" 075 20 12 R PE SAD

Gruppo FR+L
FR+L Unit



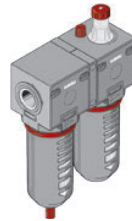
CODICE-CODE	REF.
→ 075.16.00025	FR+L 1/2" 075 20 08 R PE SS
075.16.00053	FR+L 1/2" 075 20 12 R PE SS
075.16.00065	FR+L 1/2" 075 5 08 R PE SS
075.16.00066	FR+L 1/2" 075 5 12 R PE SS
075.16.00501	FR+L 1/2" 075 20 08 R PE SS VL
Versione Scarico Automatico a galleggiante	
Float type automatic drain version	
075.16.00026	FR+L 1/2" 075 20 08 R PE SA
075.16.00068	FR+L 1/2" 075 20 12 R PE SA
Versione Scarico Automatico "Differenziale"	
"Differential" automatic drain version	
075.16.00096	FR+L 1/2" 075 20 08 R PE SAD
075.16.00097	FR+L 1/2" 075 20 12 R PE SAD

Gruppo V3+FR+L
V3+FR+L Unit



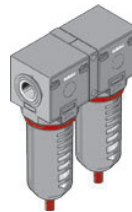
CODICE-CODE	REF.
→ 075.36.00025	V3+FR+L 1/2" 075 20 08 R PE SS
075.36.00053	V3+FR+L 1/2" 075 20 12 R PE SS
075.36.00064	V3+FR+L 1/2" 075 5 04 R PE SS
075.36.00065	V3+FR+L 1/2" 075 5 08 R PE SS
075.36.00066	V3+FR+L 1/2" 075 5 12 R PE SS
075.36.00501	V3+FR+L 1/2" 075 20 08 R PE SS VL
075.36.00505	V3+FR+L 1/2" 075 20 12 R PE SS VL
Versione Scarico Automatico a galleggiante	
Float type automatic drain version	
075.36.00026	V3+FR+L 1/2" 075 20 08 R PE SA
075.36.00068	V3+FR+L 1/2" 075 20 12 R PE SA
Versione Scarico Automatico "Differenziale"	
"Differential" automatic drain version	
075.36.00072	V3+FR+L 1/2" 075 20 08 R PE SAD
075.36.00073	V3+FR+L 1/2" 075 20 12 R PE SAD

Gruppo F+L
F+L Unit



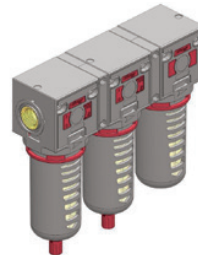
CODICE-CODE	REF.
→ 075.17.00025	F+L 1/2" 075 20 PE SS
075.17.00031	F+L 1/2" 075 5 PE SS
075.17.00501	F+L 1/2" 075 20 PE SS VL
Versione Scarico Automatico a galleggiante	
Float type automatic drain version	
075.17.00026	F+L 1/2" 075 20 PE SA
075.17.00032	F+L 1/2" 075 5 PE SA
075.17.00511	F+L 1/2" 075 20 PE SA VL
Versione Scarico Automatico "Differenziale"	
"Differential" automatic drain version	
075.17.00034	F+L 1/2" 075 5 PE SAD
080.07.00006	F+L 3/4" 080 5 PE SAD

Gruppo F+MF
F+MF Unit



CODICE-CODE	REF.
→ 075.19.00001	F 1/2" 075 5 PE SS+MF 1/2" 075 0,01 PE SS
Versione Scarico Automatico a galleggiante	
Float type automatic drain version	
075.19.00002	F 1/2" 075 5 PE SS+MF 1/2" 075 0,01 PE SA
Versione Scarico Automatico "Differenziale"	
"Differential" automatic drain version	
075.19.00004	F 1/2" 075 5 PE SS+MF 1/2" 075 0,01 PE SAD

Gruppo F+MF+CF
F+MF+CF Unit



CODICE-CODE	REF.
→ 075.18.00001	F 5 PESS + MF 0,01 PESS + CF PE 1/2 075
075.18.00002	F 5 PESS + MF 0,01 PESA + CF PE 1/2 075

Pressostato
Pressure switch



CODICE-CODE	REF.
→ A50.06.00005	AP1 - 3-02-03-G

Per maggiori informazioni relative al pressostato ed alle prese d'aria con pressostato
vedi pag. 105
For further information about pressure switch or air take-off with pressure switch, please
see page 105

→ = Standard version