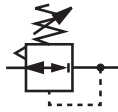
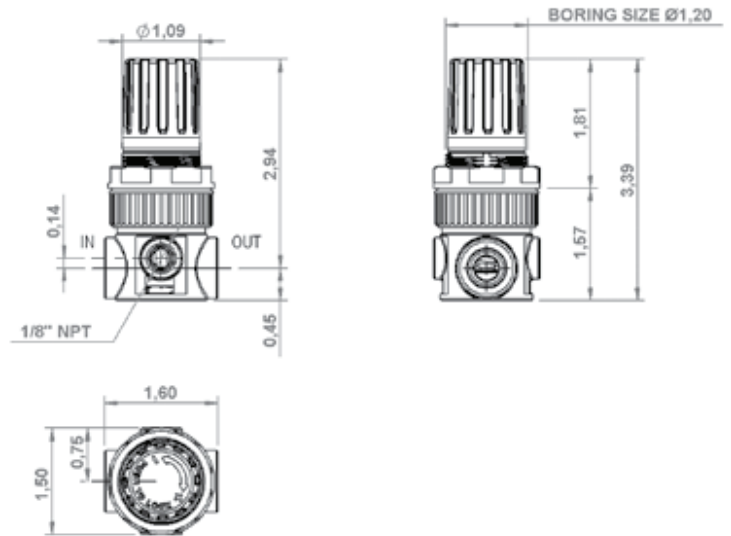


# Line 039 1/8"-1/4" NPT Precision Microregulator



**NEW**



## Guide to references

### MR 1/8" NPT 039 08 R

<b>Connection</b> 1/8" = 1/8" NPT 1/4" = 1/4" NPT	<b>Special Type</b> FA = Air escape
<b>Range of pressure</b> 02 = 0÷30 Psig (0÷2 Bar) 04 = 0÷60 Psig (0÷4 Bar) 06 = 0÷90 Psig (0÷6 Bar) 08 = 0÷120 Psig (0÷8 Bar) 12 = 0÷175 Psig (0÷12 Bar)	<b>Version</b> R = Relieving (for air) A = No relieving (for water)

## Order Codes

CODE	REF
X39.00.00001	MR 1/8 NPT 039 02 R
X39.00.00002	MR 1/8 NPT 039 04 R
→ X39.00.00003	MR 1/8 NPT 039 08 R
X39.00.00004	MR 1/8 NPT 039 12 R
X39.00.00401	MR 1/4 NPT 039 02 R
X39.00.00402	MR 1/4 NPT 039 04 R
→ X39.00.00403	MR 1/4 NPT 039 08 R
X39.00.00404	MR 1/4 NPT 039 12 R

CODE	REF
X39.00.00701	MR 1/8 NPT 039 02 R FA/RM (air escape)
X39.00.00702	MR 1/8 NPT 039 04 R FA/RM (air escape)
→ X39.00.00703	MR 1/8 NPT 039 08 R FA/RM (air escape)
X39.00.00704	MR 1/8 NPT 039 12 R FA/RM (air escape)

CODE	REF
X39.00.00801	MR 1/4 NPT 039 02 R FA (air escape)
X39.00.00802	MR 1/4 NPT 039 04 R FA (air escape)
→ X39.00.00803	MR 1/4 NPT 039 08 R FA (air escape)
X39.00.00804	MR 1/4 NPT 039 12 R FA (air escape)

CODE	REF
X39.00.00201	MR 1/8 NPT 039 02 A (water)
X39.00.00202	MR 1/8 NPT 039 04 A (water)
X39.00.00203	MR 1/8 NPT 039 08 A (water)
X39.00.00204	MR 1/8 NPT 039 12 A (water)
X39.00.00601	MR 1/4 NPT 039 02 A (water)
X39.00.00602	MR 1/4 NPT 039 04 A (water)
X39.00.00603	MR 1/4 NPT 039 08 A (water)
X39.00.00604	MR 1/4 NPT 039 12 A (water)

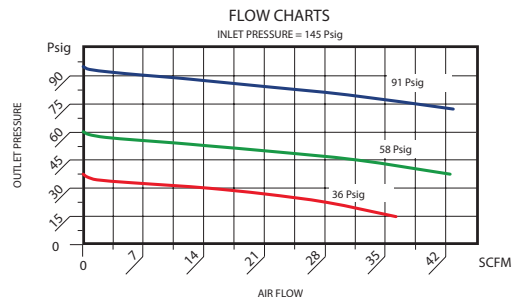
→ = Standard version

## Precision Microregulator

Sensitive model with high performance and high stability with low load losses and big flow rate.

- \* Downstream overpressures quickly eliminated.
- \* Can be wall mounted with ring nut for panel assembling or, on request, with bracket.
- \* Usable on version for air (with relieving and red knob) or for water (without relieving and black knob).
- \* Lockable safety knob.
- \* Pressure ranges:  
0÷30 Psig, 0÷60 Psig, 0÷120 Psig (standard), 0÷180 Psig  
0÷2 Bar, 0÷4 Bar, 0÷8 Bar (standard), 0÷12,5 Bar
- \* Maximum inlet pressure: 230 Psig (16 Bar).
- \* Max ambient temp. (at 145 Psig): 122 °F (50 °C).
- \* Max. torque inserts 1/8" NPT IN-OUT: 177 In lb (20 N·m).
- \* Max. torque inserts 1/4" NPT IN-OUT: 221 In lb (25 N·m).
- \* Reference flow rate (P=91 Psig - Δp=14.5 Psig): 31,8 SCFM (900 NI/min).
- \* Weight: 0.22 lb (0,100 Kg).
- \* FA version available:  
provided with a CONTROLLED AIR ESCAPE which is able to achieve highly accurate pressure adjustment.

## Performances data



Unit with gauge available

order code example  
X39.00.M0001 MR 1/8" NPT 039 02R + GAUGE  
M = Unit with gauge